

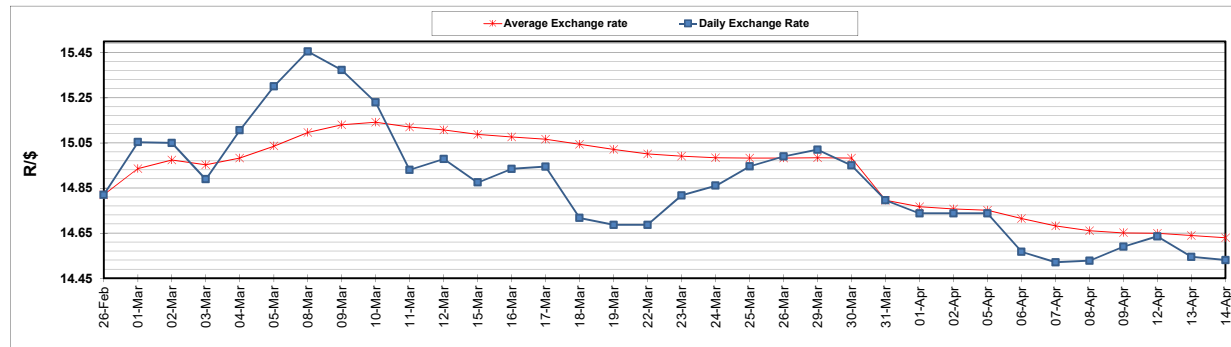
	PETROL 95 ULP	PETROL 93 ULP & LRP	DIESEL 0.05%	DIESEL 0.005%	ILL. PAR.
GAUTENG PUMP PRICE (SA c/l) AS FROM 07/04/2021	1,732.000	1,710.000	-	-	-
WHOLESALE PRICE (SA c/l) AS FROM 07/04/2021	-	-	1,477.620	1,480.020	880.488
SINGLE NATIONAL MAXIMUM RETAIL PRICE	-	-	-	-	1,106.000
BASIC FUEL PRICE - 14/04/2021 (SA c/l)	719.028	704.103	661.212	664.757	645.432
PRESS RELEASE CONTRIBUTION TO BFP 07/04/2021 - 14/04/2021 (SA c/l)	736.170	724.170	690.630	693.030	667.128
UNIT OVER/(UNDER) RECOVERY - 14/04/2021 (SA c/l)	17.142	20.067	29.418	28.273	21.696
AVERAGE BASIC FUEL PRICE 31/03/2021 - 14/04/2021	710.109	695.540	642.599	645.407	625.214
AVERAGE UNIT OVER/(UNDER) RECOVERY 31/03/2021 - 14/04/2021	(6.212)	(1.370)	31.212	31.714	26.460

### ANALYSIS MOVEMENT OF AVERAGE OVER/(UNDER) RECOVERY

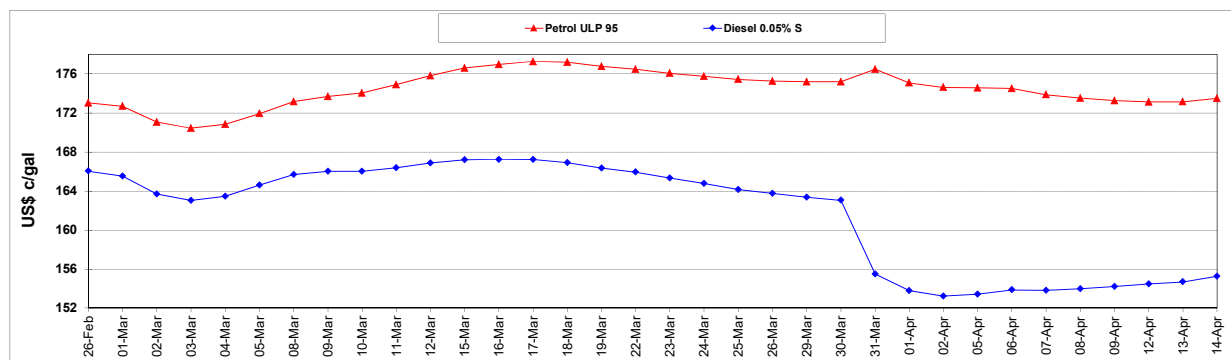
	PETROL 95	PETROL 93	DIESEL 0.05%	DIESEL 0.005%	ILL. PAR.
- MOVEMENT IN INTERNATIONAL PRODUCT PRICES	(23.371)	(18.177)	15.685	16.119	11.352
- MOVEMENT IN EXCHANGE RATE	17.159	16.807	15.528	15.595	15.107
AVERAGE UNIT OVER/(UNDER) RECOVERY 31/03/2021 - 14/04/2021	(6.212)	(1.370)	31.212	31.714	26.460

**R/\$ EXCHANGE RATE - (R/\$14.5300 - 14/04/2021)**

### EXCHANGE RATE USED IN BASIC FUEL PRICE



### INTERNATIONAL PRODUCT PRICES OF BASKET USED IN BASIC FUEL PRICE



### BASIC FUEL PRICE IN SA CENTS PER LITRE

